

Client



Source



Organic Sweet Orange (*Citrus sinensis*)
C347510RG

Sample

Organic Sweet Orange (*Citrus sinensis*)
Batch #:..... C347510RG
Type:..... Essential Oil
CAS Number:... 8008-57-9 | 8028-48-6
Natural Sourcing LLC

Client



Website

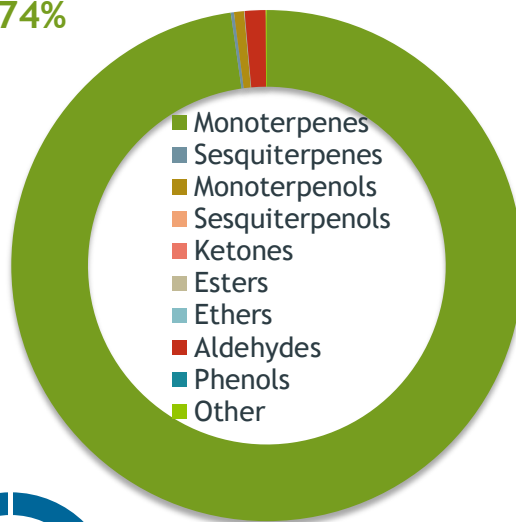


Primary

92.35% | Limonene
3.73% | Myrcene
1.03% | alpha-Pinene

Monoterpenes

97.74%



Percentage Identified

Result



Conclusion

No adulterants, diluents, or contaminants were detected via this method. This oil meets the expected profile for genuine Essential Oil of Organic Sweet Orange (*Citrus sinensis*)

Internal Number: | EVS-4131



Essential Validation Services

747 SW 2nd Ave IMB 12 Suite 306
Gainesville, FL 32601

317.361.5044 |
<https://essentialvalidationservices.com/>

Alan Chastain

Monoterpenes	97.74%	97.74%
Sesquiterpenes		0.20%
Monoterpenols		0.63%
Sesquiterpenols		0.01%
Ketones		0.00%
Esters		0.01%
Ethers		0.02%
Aldehydes		1.32%
Phenols		0.00%
Other		0.07%

- Essential Oil testing is performed by using qualitative GC-MS. Method: SOP.T.01 Client Method
- This report may not be published without the consent of Essential Validation Services.
- Chromatograph image may be requested
- This report is valid for 1 year from the analyzed date

Client


NATURAL SOURCING
 Cosmetic and Personal Care Ingredient Specialists
 PROUDLY SERVING YOU FOR OVER 30 YEARS

Source

Organic Sweet Orange (*Citrus sinensis*)

C34751ORG

Total Percentage		99.94%		
Number	RT	Area %	Compound Name	Chemical Family
1	8.28	1.03%	alpha-Pinene	Monoterpene
2	9.84	0.38%	Sabinene	Monoterpene
3	10.01	0.04%	beta-Pinene	Monoterpene
4	10.60	3.73%	Myrcene	Monoterpene
5	11.18	0.58%	Octanal	Aliphatic Aldehyde
6	11.35	0.16%	delta-3-Carene	Monoterpene
7	12.47	92.35%	Limonene	Monoterpene
8	13.10	0.03%	(E)-beta-Ocimene	Monoterpene
9	14.24	0.01%	1-Octanol	Aliphatic Alcohol
10	14.79	0.02%	Terpinolene	Monoterpene
11	15.52	0.57%	Linalool	Monoterpenol
12	15.74	0.06%	Nonanal	Aliphatic Aldehyde
13	17.15	0.02%	trans-Limonene oxide	Monoterpene Ether
14	17.91	0.07%	Citronellal	Monoterpene Aldehyde
15	19.82	0.06%	alpha-Terpineol	Monoterpenol
16	20.41	0.36%	Decanal	Aliphatic Aldehyde
17	20.67	0.01%	Octyl acetate	Aliphatic Ester
18	21.81	0.05%	Neral	Monoterpene Aldehyde
19	23.16	0.11%	Geranial	Monoterpene Aldehyde
20	23.39	0.02%	Perilla aldehyde	Monoterpene Aldehyde
21	24.98	0.01%	Undecanal	Sesquiterpene Aldehyde
22	27.79	0.04%	alpha-Copaene	Sesquiterpene
23	28.33	0.02%	beta-Cubebene	Sesquiterpene
24	28.42	0.01%	beta-Elemene	Sesquiterpene
25	29.35	0.05%	Dodecanal	Aliphatic Aldehyde
26	29.58	0.03%	beta-Caryophyllene	Sesquiterpene
27	30.03	0.02%	beta-Copaene	Sesquiterpene
28	32.12	0.02%	Germacrene D	Sesquiterpene
29	32.59	0.03%	Eremophilene	Sesquiterpene
30	33.68	0.03%	delta-Cadinene	Sesquiterpene
31	34.83	0.01%	Elemol	Sesquiterpenol
32	40.31	0.01%	beta-Sinensal	Sesquiterpene Aldehyde
33	60.22	Co-Eluting	Pentacosane	Alkane

ESSENTIAL VALIDATION SERVICES | 747 SW 2ND AVE GAINESVILLE, FLORIDA 32601 | 317-361-5044

- Essential Oil testing is performed by using qualitative GC-MS. Method: SOP.T.01 Client Method
 - This report may not be published without the consent of Essential Validation Services.
 - Chromatograph image may be requested
 - This report is valid for 1 year from the analyzed date