



Client



Source



Neroli (Citrus aurantium)
209953

Sample

Neroli (Citrus aurantium)
Batch #:..... 209953
Type:..... Essential Oil
CAS Number:... 8014-17-3
Natural Sourcing LLC

Client

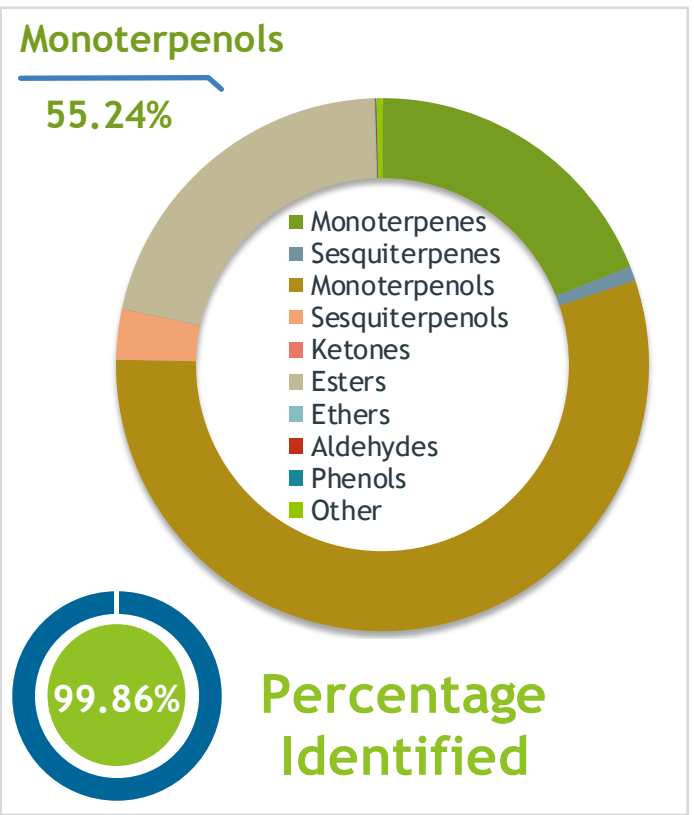


Website



Primary

47.27% | Linalool
14.57% | Linalyl acetate
7.46% | Limonene



Result



Conclusion

No adulterants, diluents, or contaminants were detected via this method. This oil meets the expected profile for genuine Essential Oil of Neroli (Citrus aurantium)

Internal Number: | EVS-3836



Essential Validation Services

747 SW 2nd Ave IMB 12 Suite 306
Gainesville, FL 32601
317.361.5044 |
<https://essentialvalidationservices.com/>
adam@essentialvalidationservices.com



Monoterpenes	18.94%	18.94%
Sesquiterpenes	0.89%	0.89%
Monoterpenols	55.24%	55.24%
Sesquiterpenols	3.05%	3.05%
Ketones	0.02%	0.02%
Esters	21.05%	21.05%
Ethers	0.07%	0.07%
Aldehydes	0.06%	0.06%
Phenols	0.03%	0.03%
Other	0.35%	0.35%

ESSENTIAL VALIDATION SERVICES | 747 SW 2ND AVE GAINESVILLE, FLORIDA 32601 | 317-361-5044

- Essential Oil testing is performed by using qualitative GC-MS. Method: SOP.T.01 Client Method
- This report may not be published without the consent of Essential Validation Services.
- Chromatograph image may be requested
- This report is valid for 1 year from the analyzed date

Client



Source

Neroli (*Citrus aurantium*)

209953

Total Percentage		99.86%		
Number	RT	Area %	Compound Name	Chemical Family
1	6.24	0.01%	(E)-2-Hexenol	Aliphatic Alcohol
2	6.36	0.02%	1-Hexanol	Aliphatic Alcohol
3	8.31	0.01%	alpha-Thujene	Monoterpene
4	8.57	0.27%	alpha-Pinene	Monoterpene
5	9.19	0.02%	Camphene	Monoterpene
6	9.66	0.01%	Benzaldehyde	Simple Phenolic
7	10.16	0.41%	Sabinene	Monoterpene
8	10.33	3.90%	beta-Pinene	Monoterpene
9	10.70	0.02%	6-Methyl-5-hepten-2-one	Aliphatic Ketone
10	10.91	1.92%	Myrcene	Monoterpene
11	11.57	0.03%	trans-Dehydroxy linalool oxide	Monoterpene Ether
12	11.92	0.02%	Hexyl acetate	Aliphatic Ester
13	12.05	0.04%	2-Carene	Monoterpene
14	12.38	0.05%	meta-Cymene	Monoterpene
15	12.61	7.46%	Limonene	Monoterpene
16	12.97	0.57%	(Z)-beta-Ocimene	Monoterpene
17	13.44	3.76%	(E)-beta-Ocimene	Monoterpene
18	13.92	0.08%	gamma-Terpinene	Monoterpene
19	14.48	0.21%	cis-Linalool oxide (5) (furanoid)	Monoterpenol
20	15.16	0.35%	Terpinolene	Monoterpene
21	15.22	0.08%	trans-Linalool oxide (5) (furanoid)	Monoterpenol
22	16.04	47.27%	Linalool	Monoterpenol
23	16.37	0.02%	2-Phenylethanol	Simple Phenolic
24	16.53	0.04%	Perillene	Monoterpene Ether
25	17.19	0.10%	Alloocimene	Monoterpene
26	17.48	0.14%	12.94 Benzeneacetonitrile	0.00
27	19.52	0.23%	Terpinen-4-ol	Monoterpenol
28	19.98	0.02%	(Z)-3-Hexenyl butyrate	Aliphatic Ester
29	20.23	6.09%	alpha-Terpineol	Monoterpenol
30	21.31	0.01%	p-1-Menthenal-9	Monoterpene Aldehyde
31	21.61	1.34%	Nerol	Monoterpenol
32	22.86	14.57%	Linalyl acetate	Monoterpene Ester
33	23.55	0.05%	Citral	Monoterpene Aldehyde
34	24.48	0.11%	Indole	Indole
35	26.36	0.07%	delta-Elemene	Sesquiterpene

ESSENTIAL VALIDATION SERVICES | 747 SW 2ND AVE GAINESVILLE, FLORIDA 32601 | 317-361-5044

- Essential Oil testing is performed by using qualitative GC-MS. Method: SOP.T.01 Client Method
 - This report may not be published without the consent of Essential Validation Services.
 - Chromatograph image may be requested
 - This report is valid for 1 year from the analyzed date

Client



Source



Neroli (Citrus aurantium)

209953

ESSENTIAL VALIDATION SERVICES | 747 SW 2ND AVE GAINESVILLE, FLORIDA 32601 | 317-361-5044

Number	RT	Area %	Compound Name	Chemical Family
36	26.599	0.12%	21.72 Anthranilate<methyl->	Sesquiterpene
37	27.00	0.07%	alpha-Terpinyl acetate	Monoterpene Ester
38	27.59	2.15%	Neryl acetate	Monoterpene Ester
39	28.45	4.20%	Geranyl acetate	Monoterpene Ester
40	28.84	0.01%	beta-Elemene	Sesquiterpene
41	30.03	0.54%	cis-Caryophyllene	Sesquiterpene
42	30.51	0.01%	gamma-Elemene	Sesquiterpene
43	31.50	0.06%	alpha-Humulene	Sesquiterpene
44	31.55	0.06%	(E)-beta-Farnesene	Sesquiterpene
45	32.55	0.03%	Germacrene D	Sesquiterpene
46	33.15	0.09%	Bicyclogermacrene	Sesquiterpene
47	33.65	0.02%	(E,E)-alpha-Farnesene	Sesquiterpene
48	35.84	1.89%	(E)-Nerolidol	Sesquiterpenol
49	36.30	0.03%	Spathulenol	Sesquiterpenol
50	36.48	0.02%	31.35 Longipinanol<epi->	0.00
51	40.28	0.02%	Tetradecanol	Monoterpenol
52	40.75	0.01%	36.13 Farnesal<2Z, 6Z->	0.00
53	41.17	0.01%	Heptadecane	Alkane
54	41.59	1.13%	(E,Z)-Farnesol	Sesquiterpenol
55	42.31	0.01%	37.31 Farnesal<2Z,6E->	0.00
56	45.70	0.02%	(E,E)-Farnesyl acetate	Sesquiterpene Ester
57	48.07	0.01%	Nonadecane	Alkane
58	50.52	0.02%	Sclarene	Diterpene
59	58.71	0.03%	Tricosane	Alkane

- Essential Oil testing is performed by using qualitative GC-MS. Method: SOP.T.01 Client Method
 - This report may not be published without the consent of Essential Validation Services.
 - Chromatograph image may be requested
 - This report is valid for 1 year from the analyzed date