

Client



Source



Organic Clove Bud (Eugenia Caryophyllata)
 OCLB1190006-2019

Sample

Organic Clove Bud (Eugenia Caryophyllata)
 Batch #:..... OCLB1190006-2019
 Type:..... Essential Oil
 CAS Number:... 8000-34-8
Natural Sourcing LLC

Client

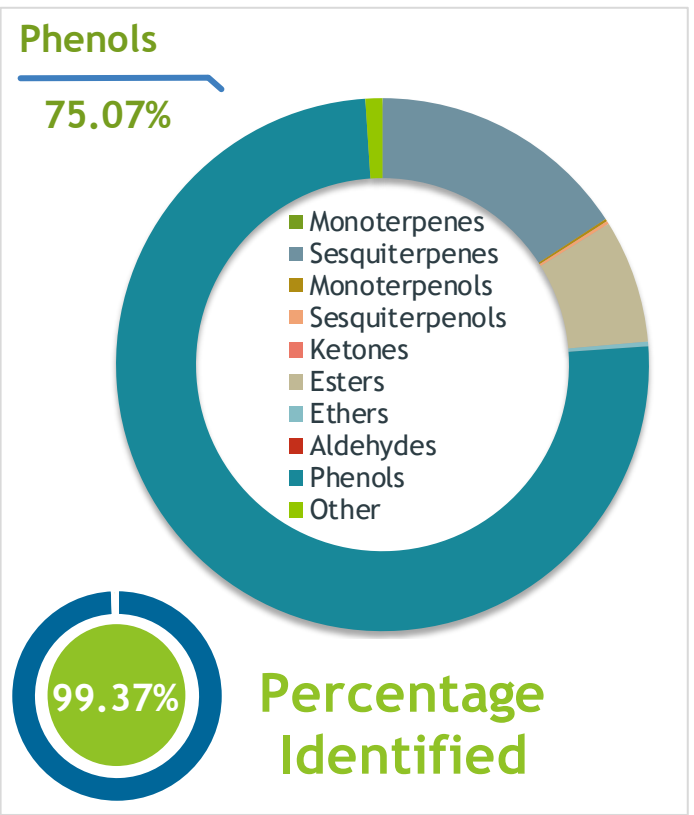


Website



Primary

74.74% | Eugenol
11.96% | beta-Caryophyllene
7.41% | Eugenyl acetate



Result



Conclusion

No adulterants, Diluents, or contaminants were detected via this method. This oil meets the expected profile for genuine Essential Oil of Clove Bud (Eugenia Caryophyllata)

Internal Number: | EVS-3415



Essential Validation Services

747 SW 2nd Ave IMB 12 Suite 306
 Gainesville, FL 32601
 317.361.5044 |
<https://essentialvalidationservices.com/>
 adam@essentialvalidationservices.com



Monoterpenes	0.00%
Sesquiterpenes	15.80%
Monoterpenols	0.15%
Sesquiterpenols	0.19%
Ketones	0.00%
Esters	7.48%
Ethers	0.28%
Aldehydes	0.00%
Phenols	75.07%
Other	1.03%

ESSENTIAL VALIDATION SERVICES | 747 SW 2ND AVE GAINESVILLE, FLORIDA 32601 | 317-361-5044

Client



Source

Organic Clove Bud (*Eugenia Caryophyllata*)

OCLB1190006-2019

Total Percentage		99.37%		
Number	RT	Area %	Compound Name	Chemical Family
1	5.34	0.34%	Furfural	Furan
2	9.81	0.06%	5-Methylfurfural	Furan
3	16.10	0.01%	Linalool	Monoterpenol
4	18.93	0.01%	Benzyl acetate	Phenolic Ester
5	20.26	0.06%	Methyl salicylate	Phenolic Ester
6	23.10	0.33%	Chavicol	Phenylpropanoid
7	27.30	0.02%	alpha-Cubebene	Sesquiterpene
8	27.75	74.74%	Eugenol	Phenylpropanoid
9	28.23	0.03%	alpha-Longipinene	Sesquiterpene
10	28.54	0.58%	alpha-Copaene	Sesquiterpene
11	29.72	0.02%	cis-Caryophyllene	Sesquiterpene
12	30.37	11.96%	beta-Caryophyllene	Sesquiterpene
13	31.80	1.51%	alpha-Humulene	Sesquiterpene
14	31.99	0.04%	allo-Aromadendrene	Sesquiterpene
15	32.52	0.18%	trans-Cadina-1(6),4-diene	Sesquiterpene
16	32.64	0.10%	gamma-Muurolene	Sesquiterpene
17	33.16	0.02%	beta-Selinene	Sesquiterpene
18	33.47	0.03%	alpha-Selinene	Sesquiterpene
19	33.62	0.06%	alpha-Muurolene	Sesquiterpene
20	33.93	0.05%	(E,E)-alpha-Farnesene	Sesquiterpene
21	34.32	7.41%	Eugenyl acetate	Phenylpropanoid Ester
22	34.41	0.76%	delta-Cadinene	Sesquiterpene
23	34.50	0.20%	trans-Calamenene	Sesquiterpene
24	34.57	0.10%	delta-Guaiene	Sesquiterpene
25	34.93	0.12%	trans-Cadina-1,4-diene	Sesquiterpene
26	35.24	0.02%	alpha-Calacorene	Sesquiterpene
27	36.53	0.14%	Caryophyllenyl alcohol	Monoterpenol
28	36.79	0.25%	Caryophyllene oxide	Sesquiterpene Ether
29	37.61	0.05%	Viridiflorol	Sesquiterpenol
30	37.84	0.03%	Humulene epoxide II	Sesquiterpene Ether
31	38.57	0.06%	1,10-di-epi-Cubenol	Sesquiterpenol
32	39.14	0.06%	1-epi-Cubenol	Sesquiterpenol
33	39.28	0.02%	alpha-Muurolol	Sesquiterpenol

ESSENTIAL VALIDATION SERVICES | 747 SW 2ND AVE GAINESVILLE, FLORIDA 32601 | 317-361-5044