

Organic Rosemary Cineole (*Rosmarinus officinalis*)  
GB16

Client



Source



Sample

Organic Rosemary Cineole (*Rosmarinus*)

Batch #:..... GB16

Type:..... Essential Oil

CAS Number:... 8000-25-7

Natural Sourcing LLC

Client



Website



Primary

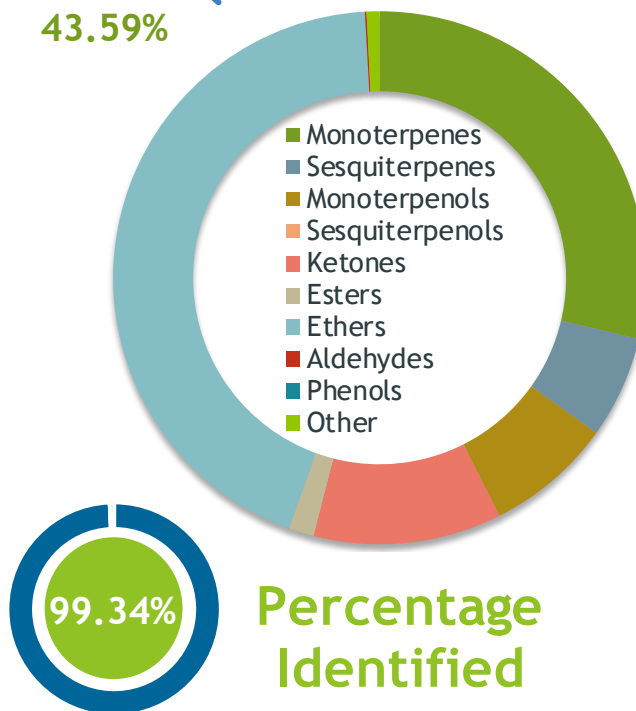
**43.38%** | 1,8-Cineole (Co-Eluting)

**11.38%** | Camphor

**10.74%** | alpha-Pinene

Ethers

43.59%



Result



Conclusion

No adulterants, diluents, or contaminants were detected via this method. This oil meets the expected profile for genuine essential oil of Organic Rosemary Cineole (*Rosmarinus officinalis*)

Internal Number: | EVS-2864



Essential Validation Services

747 SW 2nd Ave IMB 12 Suite 306  
Gainesville, FL 32601

317.361.5044 |

<https://essentialvalidation.com/>

adam@essentialvalidation.com

Monoterpenes	28.69%	28.69%
Sesquiterpenes	6.20%	6.20%
Monoterpenols	7.68%	7.68%
Sesquiterpenols	0.00%	0.00%
Ketones	11.42%	11.42%
Esters	1.54%	1.54%
Ethers	43.59%	43.59%
Aldehydes	0.10%	0.10%
Phenols	0.00%	0.00%
Other	0.78%	0.78%

Client



Source



Organic Rosemary Cineole (*Rosmarinus officinalis*)  
GB16

Total Percentage		99.34%			
Number	RT	Area %	Compound Name	RI	Chemical Family
1	12.25	0.01%	Hashishene	922.00	Monoterpene
2	12.37	0.16%	Tricyclene	923.00	Monoterpene
3	12.60	0.40%	alpha-Thujene	927.80	Monoterpene
4	12.88	10.74%	alpha-Pinene	936.10	Monoterpene
5	13.49	4.57%	Camphene	950.30	Monoterpene
6	14.56	0.15%	Sabinene	973.00	Monoterpene
7	14.68	7.96%	beta-Pinene	974.00	Monoterpene
8	14.81	0.12%	1-Octen-3-ol	980.00	Aliphatic Alcohol
9	15.09	0.04%	Octan-3-one	981.00	Aliphatic Ketone
10	15.27	1.43%	Myrcene	989.20	Monoterpene
11	15.83	0.15%	alpha-Phellandrene	1002.00	Monoterpene
12	16.08	0.19%	delta-3-Carene	1008.00	Monoterpene
13	16.35	0.34%	alpha-Terpinene	1014.00	Monoterpene
14	16.70	1.56%	para-Cymene	1024.30	Monoterpene
15	17.06	43.38%	1,8-Cineole	1031.80	Monoterpene Ether
16	17.07	Co-Eluting	Limonene	1029.50	Monoterpene
17	17.22	0.09%	(Z)-beta-Ocimene	1037.80	Monoterpene
18	17.65	0.03%	(E)-beta-Ocimene	1047.70	Monoterpene
19	18.11	0.58%	gamma-Terpinene	1054.00	Monoterpene
20	18.45	0.16%	trans-Sabinene hydrate	1072.00	Monoterpenol
21	19.33	0.33%	Terpinolene	1092.10	Monoterpene
22	19.75	1.03%	Linalool	1099.00	Monoterpenol
23	20.68	0.04%	cis-para-Menth-2-en-1-ol	1118.25	Monoterpenol
24	20.91	0.05%	alpha-Campholene aldehyde	1125.29	Monoterpene Aldehyde
25	21.39	0.07%	trans-Pinocarveol	1143.75	Monoterpenol
26	21.61	11.38%	Camphor	1147.55	Monoterpene Ketone
27	21.76	0.04%	Camphene hydrate	1151.00	Monoterpenol
28	22.41	3.18%	Borneol	1168.71	Monoterpenol
29	22.83	0.96%	Terpinen-4-ol	1180.57	Monoterpenol
30	23.09	0.03%	para-Cymen-8-ol	1185.25	Monoterpenol
31	23.32	2.17%	alpha-Terpineol	1191.71	Monoterpenol
32	23.57	0.05%	Myrtenal	1200.43	Monoterpene Aldehyde
33	26.76	1.54%	Bornyl acetate	1288.29	Monoterpene Ester
34	28.98	0.06%	alpha-Cubebene	1355.71	Sesquiterpene
35	29.76	0.09%	alpha-Ylangene	1371.33	Sesquiterpene

ESSENTIAL VALIDATION SERVICES | 747 SW 2<sup>ND</sup> AVE GAINESVILLE, FLORIDA 32601 | 317-361-5044

Client



Source



*Organic Rosemary Cineole (Rosmarinus officinalis)*  
GB16

Number	RT	Area %	Compound Name	RI	Chemical Family
36	29.91	0.30%	alpha-Copaene	1379	Sesquiterpene
37	31.39	4.34%	beta-Caryophyllene	1427.14	Sesquiterpene
38	32.00	0.06%	Aromadendrene	1449.80	Sesquiterpene
39	32.47	0.48%	alpha-Humulene	1461.43	Sesquiterpene
40	33.11	0.26%	gamma-Muurolene	1478.86	Sesquiterpene
41	33.83	0.07%	alpha-Muurolene	1500.25	Sesquiterpene
42	34.00	0.07%	beta-Bisabolene	1509.86	Sesquiterpene
43	34.29	0.13%	gamma-Cadinene	1515.29	Sesquiterpene
44	34.53	0.33%	delta-Cadinene	1524.14	Sesquiterpene
45	35.17	0.01%	alpha-Calacorene	1537.14	Sesquiterpene
46	36.43	0.21%	Caryophyllene oxide	1594.86	Sesquiterpene Ether

ESSENTIAL VALIDATION SERVICES | 747 SW 2<sup>ND</sup> AVE GAINESVILLE, FLORIDA 32601 | 317-361-5044

- This report is the digitally signed and will only be considered valid if the signature is intact.
- This report may not be published without the consent of Essential Validation Services.
- Chromatograph image may not show full run time