



Essential Validation Services





Sample:

Client: | Natural Sourcing
Sample: | Pink Peppercorn (Schinus molle)
Batch # | CUZ010618
Cas Number | 68917-52-2
Type: | Essential Oil

Conclusion:

- No adulterants, diluents, or contaminants were detected via this method.
- This oil meets the expected profile for genuine essential oil of Pink Peppercorn (Schinus molle).



X 

Validated By:

Essential Validation Services

747 SW 2nd Ave, Gainesville, FL 32601

Phone: 317-361-5044 E-mail: Adam@essentialvalidationservices.com

Summary of Analyses

A fresh sample of Pink Peppercorn (Schinus molle) Essential Oil (10 uL in .5to.5 mL Hexane + ETOH) was prepared and analyzed via split injection GC/EI-MS.



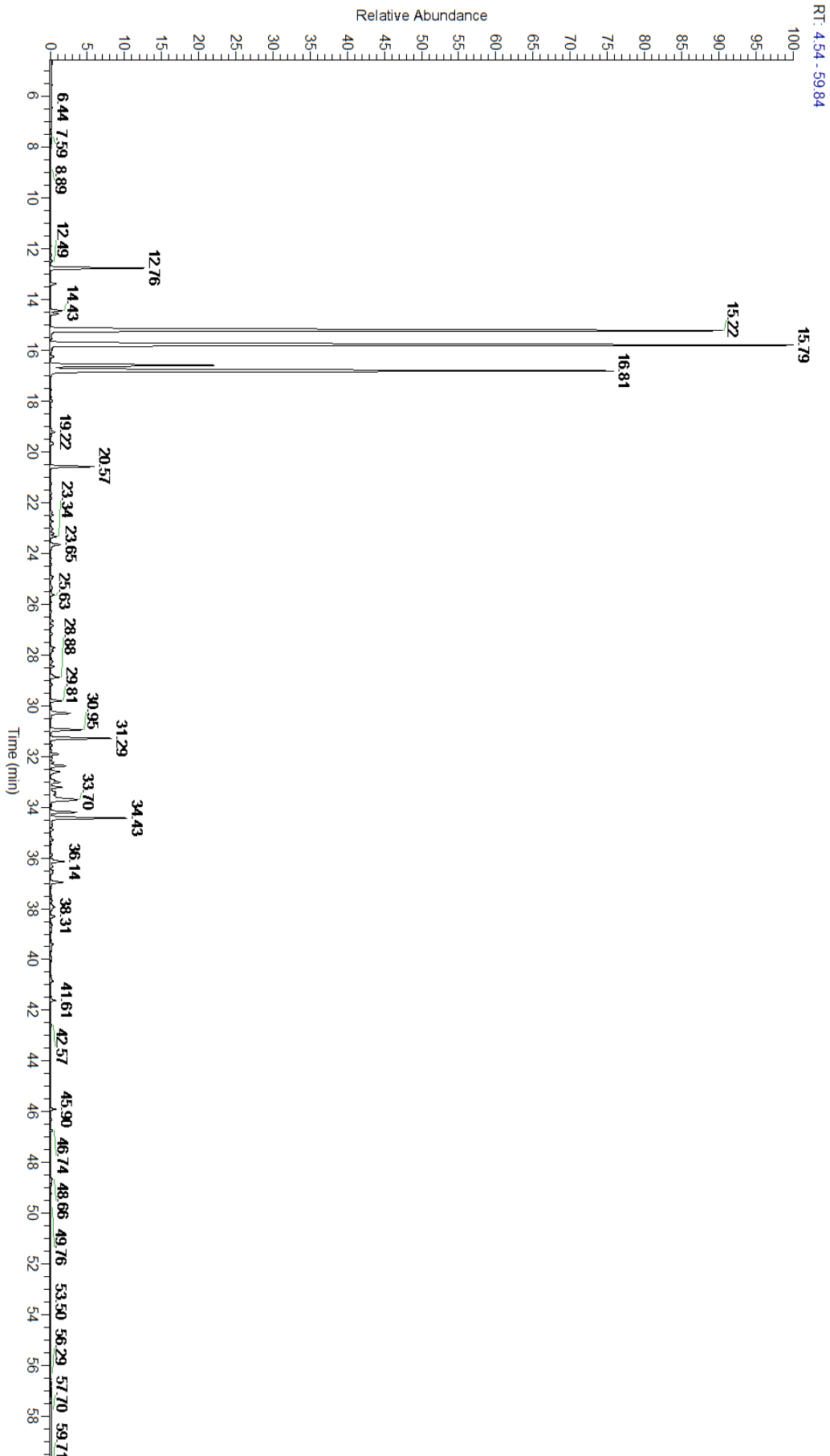
Main Compounds	Percentages
alpha-Phellandrene	27.50%
Myrcene	25.71%
beta-Phellandrene (Co-Elutir	20.12%
para-Cymene	5.47%
alpha-Pinene	2.73%
delta-Cadinene	2.39%
beta-Caryophyllene	1.88%
alpha-Muurolene	1.48%
Methyl octanoate	1.20%
alpha-Gurjunene	1.01%
gamma-Cadinene	0.84%
beta-Elemene	0.69%
alpha-Humulene	0.50%

Monoterpenes	Sesquiterpenes	Monoterpenols	Sesquiterpenols	Ketones
82.55%	10.93%	0.12%	0.70%	0.11%
Esters	Ethers	Aldehydes	Phenols	Other
1.79%	0.21%	0.02%	0.00%	3.57%



- Monoterpenes
- Sesquiterpenes
- Monoterpenols
- Sesquiterpenols
- Ketones
- Esters
- Ethers
- Phenols
- Other

ESSENTIAL VALIDATION SERVICES | 747 SW 2ND AVE GAINESVILLE, FLORIDA 32601 | 317-361-5044



ESSENTIAL VALIDATION SERVICES | 747 SW 2ND AVE GAINESVILLE, FLORIDA 32601 | 317-361-5044



ESSENTIAL VALIDATION SERVICES | 747 SW 2ND AVE GAINESVILLE, FLORIDA 32601 | 317-361-5044

Total Percentage		96.43%			
Peak Number	RT	Area %	Compound Name	RI	Chemical Family
1	12.49	0.04%	alpha-Thujene	927.80	Monoterpene
2	12.76	2.73%	alpha-Pinene	936.10	Monoterpene
3	13.38	0.16%	Camphene	950.30	Monoterpene
4	14.43	0.33%	Sabinene	973.00	Monoterpene
5	14.57	0.23%	beta-Pinene	974.00	Monoterpene
6	15.22	25.71%	Myrcene	989.20	Monoterpene
7	15.52	0.03%	Ethyl hexanoate	999.50	Monoterpene Ester
8	15.79	27.50%	alpha-Phellandrene	1002.00	Monoterpene
9	16.24	0.08%	alpha-Terpinene	1014.00	Monoterpene
10	16.59	5.47%	para-Cymene	1024.30	Monoterpene
11	16.81	20.12%	beta-Phellandrene	1030.00	Monoterpene
12	16.81	Co-Eluting	Limonene	1029.50	Monoterpene
13	18.00	0.05%	gamma-Terpinene	1054.00	Monoterpene
14	19.22	0.13%	Terpinolene	1092.10	Monoterpene
15	19.70	0.13%	Perillene	1099.20	Monoterpene Ether
16	20.57	1.20%	Methyl octanoate	1123.00	Aliphatic Ester
17	21.64	0.02%	(Z)-Isocitral	1163.50	Monoterpene Aldehyde
18	22.73	0.07%	Terpinen-4-ol	1180.57	Monoterpenol
19	23.04	0.09%	Cryptone	1187.33	Monoterpene Ketone
20	23.34	0.15%	Ethyl octanoate	1197.50	Monoterpene Ester
21	25.30	0.02%	Carvotanacetone	1245.50	Monoterpene Ketone
22	25.63	0.12%	Methyl citronellate	1261.00	Monoterpene Ester
23	26.64	0.08%	Bornyl acetate	1288.29	Monoterpene Ester
24	27.16	0.05%	Carvacrol	1304.40	Monoterpenol
25	27.84	0.09%	Methyl geranate	1323.80	Monoterpene Ester
26	28.47	0.10%	delta-Elemene	1335.83	Sesquiterpene
27	28.88	0.27%	alpha-Cubebene	1355.71	Sesquiterpene
28	29.18	0.05%	Neryl acetate	1362.90	Monoterpene Ester
29	29.81	0.32%	alpha-Copaene	1379.00	Sesquiterpene
30	30.29	0.69%	beta-Elemene	1389.20	Sesquiterpene
31	30.95	1.01%	alpha-Gurjunene	1412.00	Sesquiterpene
32	31.29	1.88%	beta-Caryophyllene	1427.14	Sesquiterpene
33	31.91	0.25%	Aromadendrene	1449.80	Sesquiterpene
34	32.37	0.50%	alpha-Humulene	1461.43	Sesquiterpene
35	32.60	0.36%	allo-Aromadendrene	1471.00	Sesquiterpene
36	33.02	0.31%	gamma-Murolene	1478.86	Sesquiterpene
37	33.21	0.32%	Germacrene D	1484.71	Sesquiterpene
38	33.40	0.14%	beta-Selinene	1487.57	Sesquiterpene
39	33.70	1.48%	alpha-Murolene	1500.25	Sesquiterpene
40	34.19	0.84%	gamma-Cadinene	1515.29	Sesquiterpene
41	34.43	2.39%	delta-Cadinene	1524.14	Sesquiterpene
42	34.89	0.07%	alpha-Cadinene	1537.86	Sesquiterpene
43	35.29	0.07%	Geranyl butyrate	1558.00	Monoterpene Ester