



Essential Validation Services





Sample:

Client: | Natural Sourcing
 Sample: | Peruvian Myrtle (Luma chequen)
 Batch # | PIU100718
 CAS Number |
 Type: | Essential Oil

Conclusion:

- No adulterants, diluents, or contaminants were detected via this method.
- This oil meets the expected profile for genuine essential oil of Peruvian Myrtle (Luma Chequen).



X 

Validated By:

Essential Validation Services

747 SW 2nd Ave, Gainesville, FL 32601

Phone: 317-361-5044 E-mail: Adam@essentialvalidationservices.com

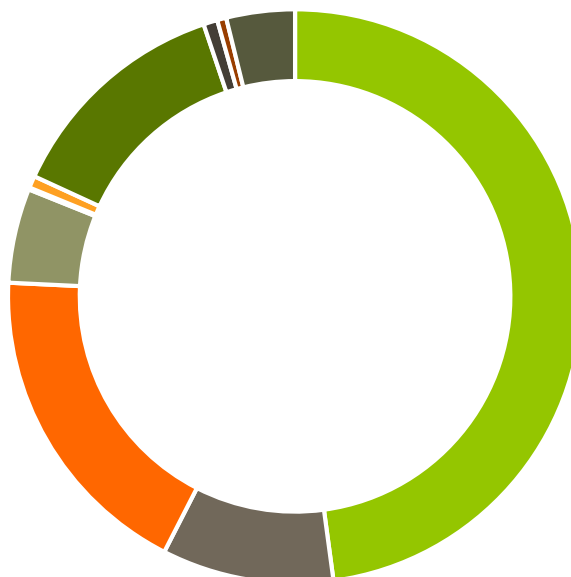
Summary of Analyses

A fresh sample of Peruvian Myrtle (Luma Chequen) Essential Oil (10 uL in .5to.5 mL Hexane + ETOH) was prepared and analyzed via split injection GC/EI-MS.



Main Compounds	Percentages
Limonene	29.82%
1,8-Cineole	12.17%
Terpinen-4-ol	8.26%
alpha-Pinene	5.59%
alpha-Terpineol	4.57%
Linalool	4.25%
para-Cymene	3.57%
beta-Selinene	2.15%
beta-Pinene	1.98%
beta-Caryophyllene	1.95%
gamma-Terpinene	1.90%
alpha-Selinene	1.82%
Myrcene	1.77%

Monoterpenes	Sesquiterpenes	Monoterpenols	Sesquiterpenols	Ketones
47.86%	9.67%	18.23%	5.32%	0.11%
Esters	Ethers	Aldehydes	Phenols	Other
0.68%	12.97%	0.79%	0.51%	3.86%

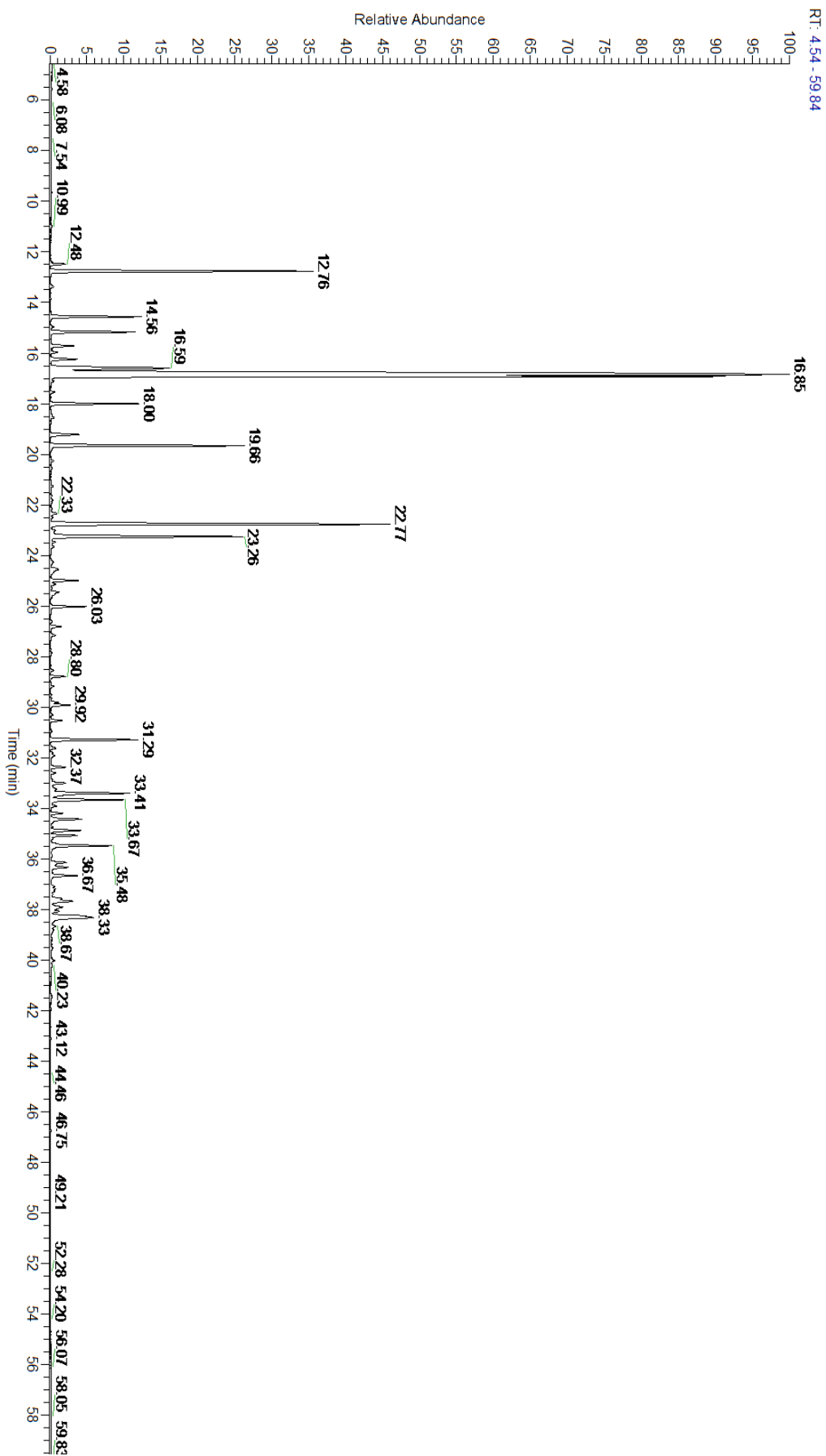


- Monoterpenes ■ Sesquiterpenes ■ Monoterpenols
- Sesquiterpenols ■ Ketones ■ Esters
- Ethers ■ Phenols ■ Other

ESSENTIAL VALIDATION SERVICES | 747 SW 2ND AVE GAINESVILLE, FLORIDA 32601 | 317-361-5044



PROUDLY SERVING YOU FOR OVER 20 YEARS



ESSENTIAL VALIDATION SERVICES | 747 SW 2ND AVE GAINESVILLE, FLORIDA 32601 | 317-361-5044



ESSENTIAL VALIDATION SERVICES | 747 SW 2ND AVE GAINESVILLE, FLORIDA 32601 | 317-361-5044

Total Percentage		96.17%			
Peak Number	RT	Area %	Compound Name	RI	Chemical Family
1	12.39	0.01%	Methyl hexanoate		
2	12.48	0.31%	alpha-Thujene	927.80	Monoterpene
3	12.76	5.59%	alpha-Pinene	936.10	Monoterpene
4	13.37	0.09%	Camphene	950.30	Monoterpene
5	14.56	1.98%	beta-Pinene	974.00	Monoterpene
6	14.97	0.06%	6-Methyl-5-hepten-2-one	982.00	Aliphatic Ketone
7	15.17	1.77%	Myrcene	989.20	Monoterpene
8	15.72	0.57%	alpha-Phellandrene	1002.00	Monoterpene
9	15.97	0.15%	delta-3-Carene	1008.00	Monoterpene
10	16.24	0.60%	alpha-Terpinene	1014.00	Monoterpene
11	16.59	3.57%	para-Cymene	1024.30	Monoterpene
12	16.85	29.82%	Limonene	1029.50	Monoterpene
13	16.93	12.17%	1,8-Cineole	1031.80	Monoterpene Ether
14	17.12	0.04%	(Z)-beta-Ocimene	1037.80	Monoterpene
15	17.54	0.08%	(E)-beta-Ocimene	1047.70	Monoterpene
16	18.00	1.90%	gamma-Terpinene	1054.00	Monoterpene
17	18.45	0.03%	1-Octanol	1075.14	Aliphatic Alcohol
18	18.55	0.08%	cis-Linalool oxide	1075.10	Monoterpenol
19	19.23	0.74%	Terpinolene	1092.10	Monoterpene
20	19.66	4.25%	Linalool	1099.00	Monoterpenol
21	20.27	0.09%	beta-Fenchol	1114.50	Monoterpenol
22	21.26	0.07%	trans-Pinocarveol	1143.75	Monoterpenol
23	21.81	0.05%	Menthone	1155.00	Monoterpene Ketone
24	22.33	0.18%	Borneol	1168.71	Monoterpenol
25	22.77	8.26%	Terpinen-4-ol	1180.57	Monoterpenol
26	23.02	0.12%	para-Cymen-8-ol	1185.25	Monoterpenol
27	23.26	4.57%	alpha-Terpineol	1191.71	Monoterpenol
28	23.48	0.13%	Methyl chavicol	1193.40	Phenylpropanoid
29	25.00	0.65%	Citral	1244.12	Monoterpene
30	25.14	0.12%	Carvacrol methyl ether	1247.50	Phenylpropanoid
31	25.45	0.36%	Geraniol	1255.29	Monoterpenol
32	26.03	0.79%	Geranial	1272.00	Monoterpene Aldehyde
33	26.82	0.25%	Carvacrol	1304.40	Monoterpenol
34	27.85	0.03%	Methyl geranate	1323.80	Monoterpene Ester
35	28.80	0.32%	alpha-Terpinyl acetate	1353.00	Monoterpene Ether
36	29.18	0.06%	Neryl acetate	1362.90	Monoterpene Ester
37	29.51	0.02%	Carvacryl acetate	1370.00	Monoterpene Ester
38	29.81	0.18%	alpha-Copaene	1379.00	Sesquiterpene
39	29.92	0.46%	Methyl cinnamate	1380.60	Phenylpropanoid Ester
40	30.54	0.26%	Methyl eugenol	1407.27	Phenylpropanoid
41	31.29	1.95%	beta-Caryophyllene	1427.14	Sesquiterpene
42	31.63	0.14%	gamma-Elemene	1434.00	Sesquiterpene
43	31.92	0.13%	Aromadendrene	1449.80	Sesquiterpene

