



Orange, Sweet (*Citrus sinensis*)
FS-051920-23

Client



NATURAL SOURCING
Essential and Personal Care Ingredients

Source



Sample

Orange, Sweet (*Citrus sinensis*)

Batch #:..... FS-051920-23

Type:..... Essential Oil

CAS Number:... 84012-28-2

Natural Sourcing LLC

Client



Website

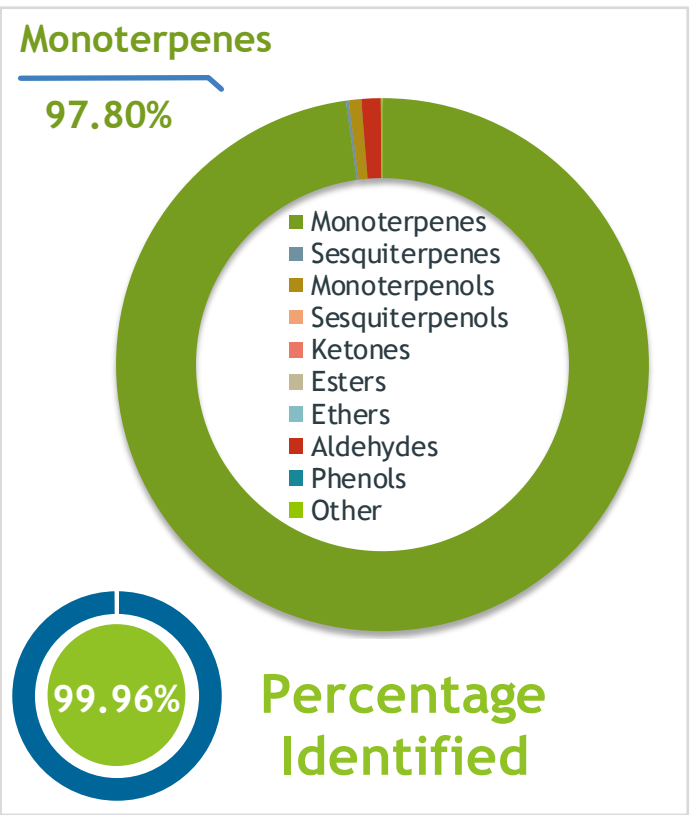


Primary

92.78% | Limonene

3.46% | Myrcene

0.89% | alpha-Pinene



Result



Conclusion

No adulterants, diluents, or contaminants were detected via this method. This oil meets the expected profile for genuine Essential Oil of Orange, Sweet (*Citrus sinensis*)

Internal Number: | EVS-3719



Essential Validation Services

747 SW 2nd Ave IMB 12 Suite 306
Gainesville, FL 32601

317.361.5044 | <https://essentialvalidationservices.com/>

adam@essentialvalidationservices.com



Monoterpenes	97.80%	97.80%
Sesquiterpenes	0.17%	0.17%
Monoterpenols	0.76%	0.76%
Sesquiterpenols	0.00%	0.00%
Ketones	0.00%	0.00%
Esters	0.00%	0.00%
Ethers	0.00%	0.00%
Aldehydes	1.17%	1.17%
Phenols	0.00%	0.00%
Other	0.10%	0.10%

ESSENTIAL VALIDATION SERVICES | 747 SW 2ND AVE GAINESVILLE, FLORIDA 32601 | 317-361-5044

- Essential Oil testing is performed by using qualitative GC-MS. Method: SOP.T.01 Client Method
 - This report may not be published without the consent of Essential Validation Services.
 - Chromatograph image may be requested
 - This report is valid for 1 year from the analyzed date

Client



Source

Orange, Sweet (*Citrus sinensis*)

FS-051920-23

Total Percentage		99.96%		
Number	RT	Area %	Compound Name	Chemical Family
1	8.57	0.89%	alpha-Pinene	Monoterpene
2	10.15	0.38%	Sabinene	Monoterpene
3	10.32	0.03%	beta-Pinene	Monoterpene
4	10.91	3.46%	Myrcene	Monoterpene
5	11.48	0.35%	Octanal	Aliphatic Aldehyde
6	11.57	0.07%	alpha-Phellandrene	Monoterpene
7	11.68	0.14%	delta-3-Carene	Monoterpene
8	12.74	92.78%	Limonene	Monoterpene
9	13.43	0.03%	(Z)-beta-Ocimene	Monoterpene
10	14.56	0.06%	1-Octanol	Aliphatic Alcohol
11	15.15	0.02%	Terpinolene	Monoterpene
12	15.86	0.58%	Linalool	Monoterpenol
13	16.09	0.07%	Nonanal	Aliphatic Aldehyde
14	18.27	0.07%	Citronellal	Monoterpene Aldehyde
15	20.18	0.17%	alpha-Terpineol	Monoterpenol
16	20.78	0.35%	Decanal	Aliphatic Aldehyde
17	21.73	0.01%	Citronellol	Monoterpenol
18	22.18	0.08%	Neral	Monoterpene Aldehyde
19	23.53	0.13%	Citral	Monoterpene Aldehyde
20	23.77	0.03%	Perilla aldehyde	Monoterpene Aldehyde
21	25.37	0.02%	Undecanal	Sesquiterpene Aldehyde
22	28.22	0.03%	alpha-Copaene	Sesquiterpene
23	28.75	0.02%	beta-Cubebene	Sesquiterpene
24	29.74	0.05%	Dodecanal	Aliphatic Aldehyde
25	30.01	0.02%	cis-Caryophyllene	Sesquiterpene
26	30.46	0.03%	beta-Copaene	Sesquiterpene
27	32.55	0.03%	gamma-Muurolene	Sesquiterpene
28	33.03	0.01%	gamma-Gurjunene	Sesquiterpene
29	34.10	0.03%	beta-Cadinene	Sesquiterpene
30	40.74	0.02%	beta-Sinensal	Sesquiterpene Aldehyde

ESSENTIAL VALIDATION SERVICES | 747 SW 2ND AVE GAINESVILLE, FLORIDA 32601 | 317-361-5044

- Essential Oil testing is performed by using qualitative GC-MS. Method: SOP.T.01 Client Method
 - This report may not be published without the consent of Essential Validation Services.
 - Chromatograph image may be requested
 - This report is valid for 1 year from the analyzed date

Client

NATURAL SOURCING
Essential and Personal Care Ingredients
Reducing complexity and increasing value

Source



Orange, Sweet (*Citrus sinensis*)

FS-051920-23

Number	RT	Area %	Compound Name	Chemical Family

ESSENTIAL VALIDATION SERVICES | 747 SW 2ND AVE GAINESVILLE, FLORIDA 32601 | 317-361-5044

- Essential Oil testing is performed by using qualitative GC-MS. Method: SOP.T.01 Client Method
 - This report may not be published without the consent of Essential Validation Services.
 - Chromatograph image may be requested
 - This report is valid for 1 year from the analyzed date

Client



Source



Orange, Sweet (Citrus sinensis)