



Client



Source



Grapefruit, Pink (*Citrus x paradisi*, Pink)
FS-051920-21

Sample

Grapefruit, Pink (*Citrus x paradisi*, Pink)
 Batch #:..... FS-051920-21
 Type:..... Essential Oil
 CAS Number:... 8016-20-4
Natural Sourcing LLC

Client

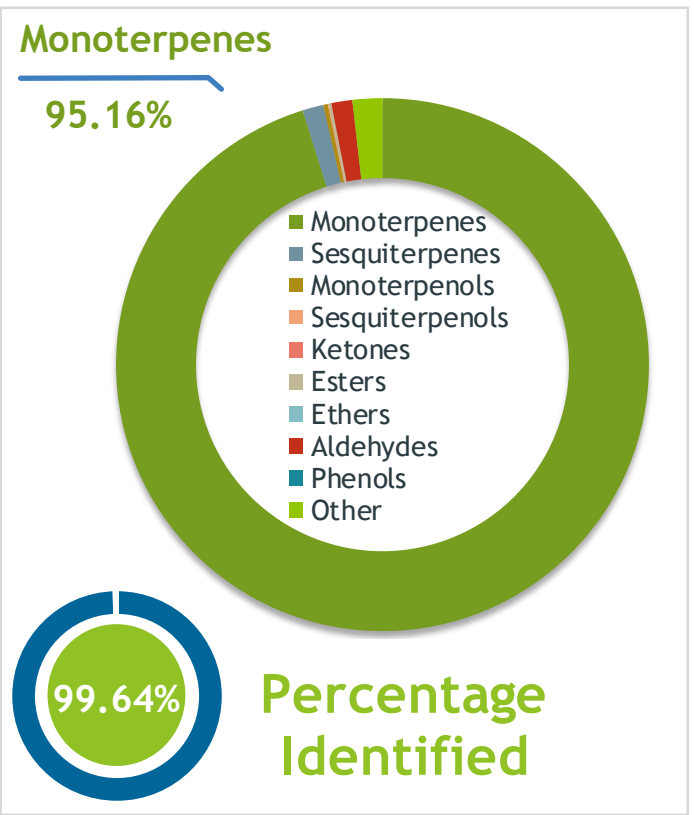


Website



Primary

90.48% | Limonene
3.22% | Myrcene
1.07% | Auraptene



Result



Conclusion

No adulterants, diluents, or contaminants were detected via this method. This oil meets the expected profile for genuine Essential Oil of Grapefruit, Pink (*Citrus x paradisi*, Pink)

Internal Number: | EVS-3721



Essential Validation Services

747 SW 2nd Ave IMB 12 Suite 306
Gainesville, FL 32601

317.361.5044 |
<https://essentialvalidationservices.com/>
adam@essentialvalidationservices.com



Monoterpenes	95.16%	95.16%
Sesquiterpenes		1.27%
Monoterpenols		0.27%
Sesquiterpenols		0.07%
Ketones		0.00%
Esters		0.15%
Ethers		0.00%
Aldehydes		1.27%
Phenols		0.00%
Other		1.81%

ESSENTIAL VALIDATION SERVICES | 747 SW 2ND AVE GAINESVILLE, FLORIDA 32601 | 317-361-5044

Client



Source

Grapefruit, Pink (*Citrus x paradisi*, Pink)

FS-051920-21

Total Percentage		99.64%		
Number	RT	Area %	Compound Name	Chemical Family
1	8.57	0.79%	alpha-Pinene	Monoterpene
2	10.16	0.46%	Sabinene	Monoterpene
3	10.33	0.03%	beta-Pinene	Monoterpene
4	10.91	3.22%	Myrcene	Monoterpene
5	11.49	0.36%	Octanal	Aliphatic Aldehyde
6	11.57	0.05%	alpha-Phellandrene	Monoterpene
7	12.74	90.48%	Limonene	Monoterpene
8	13.44	0.13%	(Z)-beta-Ocimene	Monoterpene
9	14.56	0.04%	1-Octanol	Aliphatic Alcohol
10	15.86	0.13%	Linalool	Monoterpenol
11	16.09	0.09%	Nonanal	Aliphatic Aldehyde
12	18.28	0.08%	Citronellal	Monoterpene Aldehyde
13	20.19	0.14%	alpha-Terpineol	Monoterpenol
14	20.79	0.48%	Decanal	Aliphatic Aldehyde
15	21.03	0.05%	Octyl acetate	Aliphatic Ester
16	22.19	0.06%	Neral	Monoterpene Aldehyde
17	23.54	0.11%	Citral	Monoterpene Aldehyde
18	23.78	0.03%	Perilla aldehyde	Monoterpene Aldehyde
19	27.20	0.02%	Dihydrocarvyl acetate	Monoterpene Ester
20	28.22	0.17%	alpha-Copaene	Sesquiterpene
21	28.43	0.08%	Geranyl acetate	Monoterpene Ester
22	28.76	0.15%	beta-Cubebene	Sesquiterpene
23	28.83	0.06%	beta-Elemene	Sesquiterpene
24	29.75	0.03%	Dodecanal	Aliphatic Aldehyde
25	30.02	0.48%	beta-Caryophyllene	Sesquiterpene
26	31.50	0.07%	alpha-Humulene	Sesquiterpene
27	32.55	0.12%	Germacrene D	Sesquiterpene
28	33.15	0.03%	Bicyclgermacrene	Sesquiterpene
29	34.11	0.19%	delta-cadinene	Sesquiterpene
30	35.25	0.07%	Elemol	Sesquiterpenol
31	40.75	0.03%	beta-Sinensal	Sesquiterpene Aldehyde
32	54.71	0.08%	Osthole	Coumarin
33	57.48	0.26%	Citrusal	Coumarin
34	61.08	1.07%	Auraptene	Coumarin

ESSENTIAL VALIDATION SERVICES | 747 SW 2ND AVE GAINESVILLE, FLORIDA 32601 | 317-361-5044

- Essential Oil testing is performed by using qualitative GC-MS. Method: SOP.T.01 Client Method
 - This report may not be published without the consent of Essential Validation Services.
 - Chromatograph image may be requested
 - This report is valid for 1 year from the analyzed date

