

Client



Source

Bay Rum (*Pimenta racemosa*)  
JOD0521G

Sample

Bay Rum (*Pimenta racemosa*)  
Batch #:..... JOD0521G  
Type:..... Essential Oil  
CAS Number:... 8006-78-8  
Natural Sourcing LLC

Client



Website

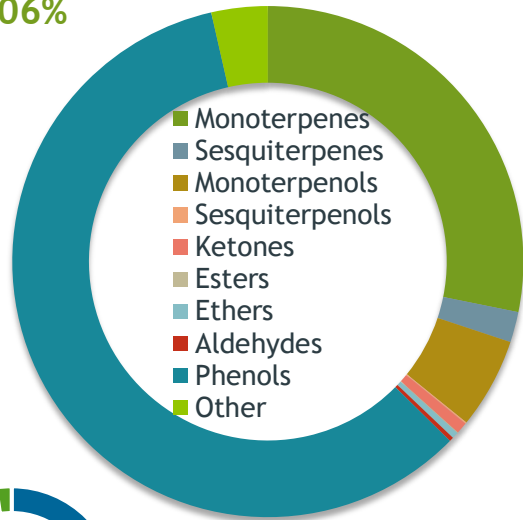


Primary

**49.35%** Eugenol  
**18.85%** Myrcene  
**7.50%** Chavicol

Phenols

59.06%



Percentage Identified

Result



Conclusion

No adulterants, diluents, or contaminants were detected via this method. This oil meets the expected profile for genuine Essential Oil of Bay Rum (*Pimenta racemosa*)

Internal Number: | EVS-4852



Essential Validation Services

747 SW 2nd Ave IMB 12 Suite 306  
Gainesville, FL 32601

317.361.5044 | <https://essentialvalidationservices.com/>

*Alan Chastain*

|                 |        |        |
|-----------------|--------|--------|
| Monoterpenes    | 28.17% | 28.17% |
| Sesquiterpenes  | 1.93%  | 1.93%  |
| Monoterpenols   | 5.74%  | 5.74%  |
| Sesquiterpenols | 0.09%  | 0.09%  |
| Ketones         | 0.73%  | 0.73%  |
| Esters          | 0.05%  | 0.05%  |
| Ethers          | 0.40%  | 0.40%  |
| Aldehydes       | 0.27%  | 0.27%  |
| Phenols         | 59.06% | 59.06% |
| Other           | 3.56%  | 3.56%  |

ESSENTIAL VALIDATION SERVICES | 747 SW 2ND AVE GAINESVILLE, FLORIDA 32601 | 317-361-5044

- Essential Oil testing is performed by using qualitative GC-MS. Method: SOP.T.01 Client Method  
- This report may not be published without the consent of Essential Validation Services.  
- Chromatograph image may be requested  
- This report is valid for 1 year from the analyzed date

Client


**NATURAL SOURCING**  
 Cosmetic and Personal Care Ingredient Specialists  
 PROUDLY SERVING YOU FOR OVER 30 YEARS

Source

Bay Rum (*Pimenta racemosa*)

JOD0521G

| Total Percentage |       | 97.68% |                                   |                      |
|------------------|-------|--------|-----------------------------------|----------------------|
| Number           | RT    | Area % | Compound Name                     | Chemical Family      |
| 1                | 7.41  | 0.02%  | Hashishene                        | Monoterpene          |
| 2                | 7.90  | 0.05%  | alpha-Thujene                     | Monoterpene          |
| 3                | 8.13  | 0.22%  | alpha-Pinene                      | Monoterpene          |
| 4                | 9.10  | 0.04%  | Camphene                          | Monoterpene          |
| 5                | 9.84  | 0.11%  | beta-Pinene                       | Monoterpene          |
| 6                | 10.06 | 0.80%  | 1-Octen-3-ol                      | Aliphatic Alcohol    |
| 7                | 10.26 | 0.71%  | Octan-3-one                       | Aliphatic Ketone     |
| 8                | 10.47 | 18.85% | Myrcene                           | Monoterpene          |
| 9                | 10.77 | 0.42%  | 3-Octanol                         | Aliphatic Alcohol    |
| 10               | 10.97 | 0.36%  | Pseudolimonene                    | Monoterpene          |
| 11               | 11.07 | 0.57%  | alpha-Phellandrene                | Monoterpene          |
| 12               | 11.18 | 0.05%  | delta-3-Carene                    | Monoterpene          |
| 13               | 11.54 | 0.12%  | alpha-Terpinene                   | Monoterpene          |
| 14               | 11.87 | 0.51%  | para-Cymene                       | Monoterpene          |
| 15               | 12.08 | 4.32%  | Limonene                          | Monoterpene          |
| 16               | 12.17 | 0.36%  | 1,8-Cineole                       | Monoterpene Ether    |
| 17               | 12.46 | 0.36%  | (Z)-beta-Ocimene                  | Monoterpene          |
| 18               | 12.92 | 1.33%  | (E)-beta-Ocimene                  | Monoterpene          |
| 19               | 13.39 | 0.07%  | gamma-Terpinene                   | Monoterpene          |
| 20               | 13.94 | 0.02%  | cis-Linalool oxide (5) (furanoid) | Monoterpenol         |
| 21               | 14.06 | 0.02%  | 1-Octanol                         | Aliphatic Alcohol    |
| 22               | 14.61 | 1.06%  | Terpinolene                       | Monoterpene          |
| 23               | 14.81 | 0.03%  | para-Cymenene                     | Monoterpene          |
| 24               | 15.35 | 4.28%  | Linalool                          | Monoterpenol         |
| 25               | 15.75 | 0.01%  | 1-Octenyl-3 acetate               | Monoterpene Ester    |
| 26               | 15.83 | 0.02%  | 1,3,8-para-Menthatriene           | Monoterpene          |
| 27               | 16.63 | 0.08%  | Alloocimene                       | Monoterpene          |
| 28               | 18.93 | 1.19%  | Terpinen-4-ol                     | Monoterpenol         |
| 29               | 19.26 | 0.05%  | para-Cymen-8-ol                   | Monoterpenol         |
| 30               | 19.45 | 0.02%  | Methyl salicylate                 | Phenolic Ester       |
| 31               | 19.62 | 0.19%  | alpha-Terpineol                   | Monoterpenol         |
| 32               | 19.77 | 0.24%  | Methyl chavicol                   | Phenylpropanoid      |
| 33               | 20.22 | 0.04%  | Decanal                           | Aliphatic Aldehyde   |
| 34               | 21.03 | 0.01%  | Nerol                             | Monoterpenol         |
| 35               | 21.62 | 0.09%  | Citral                            | Monoterpene Aldehyde |

ESSENTIAL VALIDATION SERVICES | 747 SW 2<sup>ND</sup> AVE GAINESVILLE, FLORIDA 32601 | 317-361-5044

- Essential Oil testing is performed by using qualitative GC-MS. Method: SOP.T.01 Client Method  
 - This report may not be published without the consent of Essential Validation Services.  
 - Chromatograph image may be requested  
 - This report is valid for 1 year from the analyzed date

