

Client



Source



Yuzu (Citrus junos)
GOE1004D

Sample

Yuzu (Citrus junos)
Batch #:..... GOE1004D
Type:..... Essential Oil
CAS Number:.... 233683-84-6
Natural Sourcing LLC

Client



Website

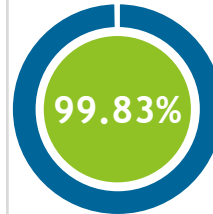
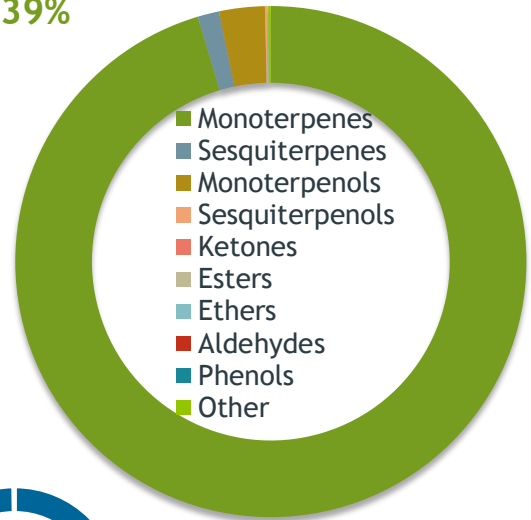


Primary

74.84% | Limonene
12.01% | gamma-Terpinene
2.56% | Linalool

Monoterpenes

95.39%



Percentage Identified

Result



Conclusion

No adulterants, diluents, or contaminants were detected via this method. This oil meets the expected profile for genuine Essential Oil of Yuzu (Citrus junos)

Internal Number: | EVS-4855



Essential Validation Services

747 SW 2nd Ave IMB 12 Suite 306
Gainesville, FL 32601

317.361.5044 |
<https://essentialvalidationservices.com/>

Alan Chastain

Monoterpenes	95.39%	95.39%
Sesquiterpenes		1.35%
Monoterpenols		2.89%
Sesquiterpenols		0.12%
Ketones		0.02%
Esters		0.02%
Ethers		0.04%
Aldehydes		0.00%
Phenols		0.00%
Other		0.17%

Client


NATURAL SOURCING
 Cosmetic and Personal Care Ingredient Specialists
 PROUDLY SERVING YOU FOR OVER 30 YEARS

Source

Yuzu (*Citrus junos*)

GOE1004D

Total Percentage		99.83%		
Number	RT	Area %	Compound Name	Chemical Family
1	7.89	0.50%	alpha-Thujene	Monoterpene
2	8.14	1.54%	alpha-Pinene	Monoterpene
3	9.69	0.21%	Sabinene	Monoterpene
4	9.85	0.90%	beta-Pinene	Monoterpene
5	10.44	1.84%	Myrcene	Monoterpene
6	11.08	0.49%	alpha-Phellandrene	Monoterpene
7	11.56	0.27%	alpha-Terpinene	Monoterpene
8	11.90	1.97%	para-Cymene	Monoterpene
9	12.21	74.84%	Limonene	Monoterpene
10	12.48	0.01%	(E)-beta-Ocimene	Monoterpene
11	12.93	0.25%	(Z)-beta-Ocimene	Monoterpene
12	13.42	12.01%	gamma-Terpinene	Monoterpene
13	14.62	0.50%	Terpinolene	Monoterpene
14	14.83	0.06%	para-Cymenene	Monoterpene
15	15.34	2.56%	Linalool	Monoterpenol
16	16.76	0.02%	cis-Limonene oxide	Monoterpene Ether
17	16.96	0.02%	trans-Limonene oxide	Monoterpene Ether
18	18.94	0.14%	Terpinen-4-ol	Monoterpenol
19	19.63	0.15%	alpha-Terpineol	Monoterpenol
20	21.82	0.02%	Carvone	Monoterpene Ketone
21	22.23	0.02%	Linalyl acetate	Monoterpene Ester
22	24.08	0.04%	Thymol	Monoterpenol
23	25.74	0.16%	delta-Elemene	Sesquiterpene
24	27.59	0.02%	alpha-Copaene	Sesquiterpene
25	28.13	0.02%	beta-Cubebene	Sesquiterpene
26	28.21	0.06%	beta-Elemene	Sesquiterpene
27	29.38	0.15%	beta-Caryophyllene	Sesquiterpene
28	29.88	0.09%	gamma-Elemene	Sesquiterpene
29	30.84	0.03%	alpha-Humulene	Sesquiterpene
30	30.94	0.30%	(E)-beta-Farnesene	Sesquiterpene
31	31.91	0.15%	Germacrene D	Sesquiterpene
32	32.50	0.31%	Bicyclogermacrene	Sesquiterpene
33	33.48	0.06%	delta-Cadinene	Sesquiterpene
34	35.66	0.12%	Spathulenol	Sesquiterpenol