


**Client**



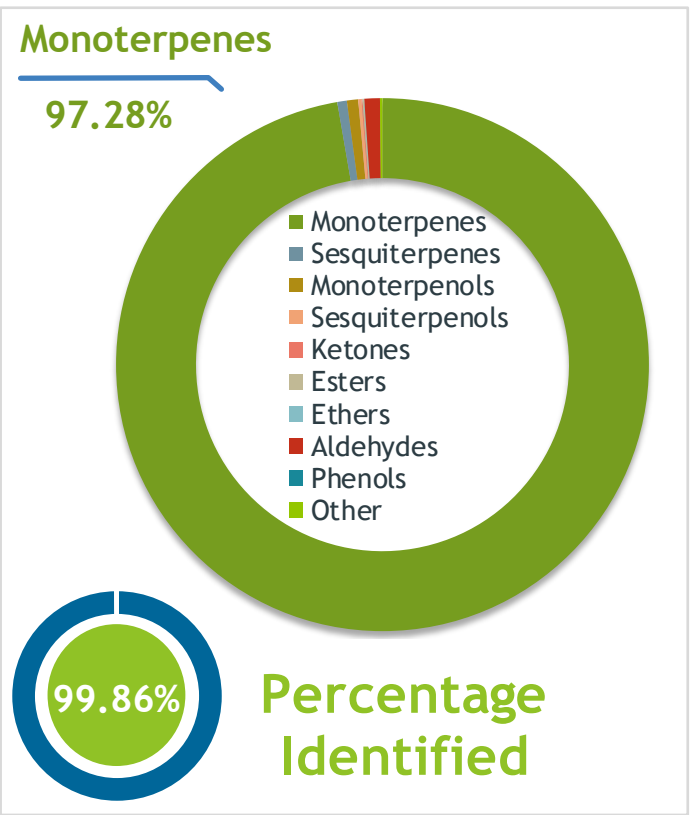
**Source**



Tangerine (*Citrus reticulata*)  
FS-051920-22

**Sample**

Tangerine (*Citrus reticulata*)  
 Batch #:..... FS-051920-22  
 Type:..... Essential Oil  
 CAS Number:... 8008-31-9  
 Natural Sourcing LLC



**Client**



**Website**



**Primary**

**89.44%** | Limonene  
**2.94%** | Myrcene  
**2.26%** | gamma-Terpinene

**Result**



**Conclusion**

No adulterants, diluents, or contaminants were detected via this method. This oil meets the expected profile for genuine Essential Oil of Tangerine (*Citrus reticulata*)

Internal Number: | EVS-3720



**Essential Validation Services**

747 SW 2nd Ave IMB 12 Suite 306  
Gainesville, FL 32601  
317.361.5044 |  
<https://essentialvalidationservices.com/>  
adam@essentialvalidationservices.com



Monoterpenes	97.28%	97.28%
Sesquiterpenes		0.58%
Monoterpenols		0.68%
Sesquiterpenols		0.20%
Ketones		0.06%
Esters		0.08%
Ethers		0.03%
Aldehydes		0.94%
Phenols		0.00%
Other		0.15%

ESSENTIAL VALIDATION SERVICES | 747 SW 2<sup>ND</sup> AVE GAINESVILLE, FLORIDA 32601 | 317-361-5044

- Essential Oil testing is performed by using qualitative GC-MS. Method: SOP.T.01 Client Method  
 - This report may not be published without the consent of Essential Validation Services.  
 - Chromatograph image may be requested  
 - This report is valid for 1 year from the analyzed date

Client



Source

Tangerine (*Citrus reticulata*)

FS-051920-22

Total Percentage		99.86%		
Number	RT	Area %	Compound Name	Chemical Family
1	8.31	0.04%	alpha-Thujene	Monoterpene
2	8.57	0.89%	alpha-Pinene	Monoterpene
3	10.15	0.95%	Sabinene	Monoterpene
4	10.32	0.15%	beta-Pinene	Monoterpene
5	10.91	2.94%	Myrcene	Monoterpene
6	11.49	0.26%	Octanal	Aliphatic Aldehyde
7	11.57	0.06%	alpha-Phellandrene	Monoterpene
8	11.68	0.07%	delta-3-Carene	Monoterpene
9	12.05	0.02%	alpha-Terpinene	Monoterpene
10	12.40	0.27%	para-Cymene	Monoterpene
11	12.73	89.44%	Limonene	Monoterpene
12	12.97	0.01%	(E)-beta-Ocimene	Monoterpene
13	13.44	0.13%	(Z)-beta-Ocimene	Monoterpene
14	13.92	2.26%	gamma-Terpinene	Monoterpene
15	15.16	0.05%	Terpinolene	Monoterpene
16	15.86	0.53%	Linalool	Monoterpenol
17	16.09	0.03%	Nonanal	Aliphatic Aldehyde
18	17.31	0.01%	cis-Limonene oxide	Monoterpene Ether
19	17.51	0.02%	trans-Limonene oxide	Monoterpene Ether
20	18.27	0.06%	Citronellal	Monoterpene Aldehyde
21	19.50	0.02%	Terpinen-4-ol	Monoterpenol
22	20.19	0.08%	alpha-Terpineol	Monoterpenol
23	20.79	0.41%	Decanal	Aliphatic Aldehyde
24	21.29	0.01%	trans-Carveol	Monoterpenol
25	21.73	0.02%	Citronellol	Monoterpenol
26	22.38	0.06%	Carvone	Monoterpene Ketone
27	23.53	0.02%	Geraniol	Monoterpenol
28	23.77	0.03%	Perilla aldehyde	Monoterpene Aldehyde
29	27.20	0.02%	Citronellyl acetate	Monoterpene Ester
30	27.57	0.02%	Neryl acetate	Monoterpene Ester
31	28.21	0.06%	alpha-Copaene	Sesquiterpene
32	28.42	0.01%	Geranyl acetate	Monoterpene Ester
33	28.75	0.03%	beta-Cubebene	Sesquiterpene
34	28.83	0.07%	beta-Elemene	Sesquiterpene
35	29.43	0.03%	Methyl N-methyl anthranilate	Phenolic Ester

ESSENTIAL VALIDATION SERVICES | 747 SW 2<sup>ND</sup> AVE GAINESVILLE, FLORIDA 32601 | 317-361-5044

- Essential Oil testing is performed by using qualitative GC-MS. Method: SOP.T.01 Client Method  
 - This report may not be published without the consent of Essential Validation Services.  
 - Chromatograph image may be requested  
 - This report is valid for 1 year from the analyzed date



