

Client



Source



Palo Santo Fruit (*Bursera graveolens*)
006-2021

Sample

Palo Santo Fruit (*Bursera graveolens*)
Batch #:..... 006-2021
Type:..... Essential Oil
CAS Number:... 959130-05-3
Natural Sourcing LLC

Client



Website

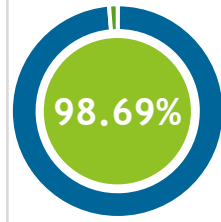
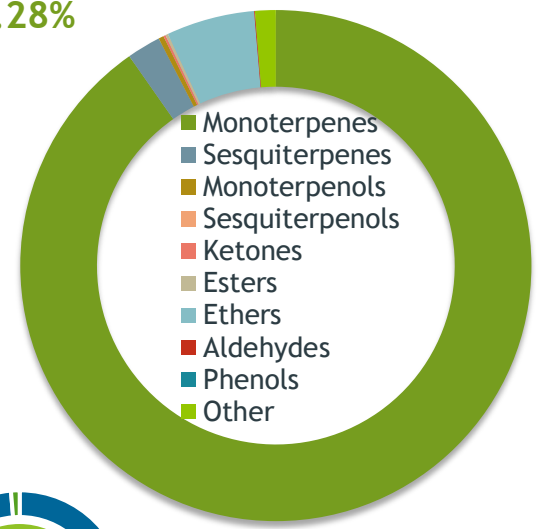


Primary

50.88% | Limonene
33.35% | alpha-Phellandrene
5.34% | Menthofuran

Monoterpenes

90.28%



Percentage Identified

Result



Conclusion

No adulterants, diluents, or contaminants were detected via this method. This oil meets the expected profile for genuine Essential Oil of Palo Santo (*Bursera graveolens*)

Internal Number: | EVS-4430



Essential Validation Services

747 SW 2nd Ave IMB 12 Suite 306
Gainesville, FL 32601

317.361.5044 |
<https://essentialvalidationservices.com/>

Alan Chastain

Monoterpenes	90.28%	90.28%
Sesquiterpenes		2.14%
Monoterpenols		0.33%
Sesquiterpenols		0.00%
Ketones		0.14%
Esters		0.17%
Ethers		5.58%
Aldehydes		0.05%
Phenols		0.00%
Other		1.31%

ESSENTIAL VALIDATION SERVICES | 747 SW 2ND AVE GAINESVILLE, FLORIDA 32601 | 317-361-5044

Client



NATURAL SOURCING
Cosmetic and Personal Care Ingredient Specialists
PROUDLY SERVING YOU FOR OVER 30 YEARS

Source



Palo Santo Fruit (Bursera graveolens)
006-2021

Total Percentage		98.69%		
Number	RT	Area %	Compound Name	Chemical Family
1	7.92	0.32%	alpha-Thujene	Monoterpene
2	8.17	1.08%	alpha-Pinene	Monoterpene
3	8.78	0.06%	Camphene	Monoterpene
4	9.57	0.03%	Isopropyl tiglate	Aliphatic Ester
5	9.72	0.34%	Sabinene	Monoterpene
6	9.89	0.06%	beta-Pinene	Monoterpene
7	10.48	1.67%	Myrcene	Monoterpene
8	11.18	33.35%	alpha-Phellandrene	Monoterpene
9	11.59	0.28%	alpha-Terpinene	Monoterpene
10	11.94	2.02%	para-Cymene	Monoterpene
11	12.24	50.88%	Limonene	Monoterpene
12	12.51	0.02%	(Z)-beta-Ocimene	Monoterpene
13	12.97	0.03%	(E)-beta-Ocimene	Monoterpene
14	13.44	0.05%	gamma-Terpinene	Monoterpene
15	14.66	0.10%	Terpinolene	Monoterpene
16	15.38	0.04%	Linalool	Monoterpenol
17	15.88	0.02%	1,3,8-para-Menthatriene	Monoterpene
18	16.42	0.03%	cis-para-Menth-2-en-1-ol	Monoterpenol
19	17.56	0.17%	trans-Limonene oxide	Monoterpene Ether
20	17.85	0.02%	Menthone	Monoterpene Ketone
21	18.20	5.34%	Menthofuran	Monoterpene Ether
22	18.98	0.06%	Terpinen-4-ol	Monoterpenol
23	19.17	0.05%	(E)-Isocitral	Monoterpene Aldehyde
24	19.67	0.07%	alpha-Terpineol	Monoterpenol
25	20.01	0.11%	cis-Pinocarveol	Monoterpenol
26	20.32	0.02%	trans-Piperitol	Monoterpenol
27	21.31	0.07%	Methyl thymol	Monoterpene Ether
28	21.58	0.12%	Pulegone	Monoterpene Ketone
29	23.69	0.07%	Bornyl acetate	Monoterpene Ester
30	25.78	0.04%	delta-Elemene	Sesquiterpene
31	25.89	0.07%	trans-Carvyl acetate	Monoterpene Ester
32	28.25	0.02%	beta-Elemene	Sesquiterpene
33	28.95	0.03%	alpha-Gurjunene	Sesquiterpene
34	29.41	0.14%	beta-Cedrene	Sesquiterpene
35	29.57	0.02%	beta-Caryophyllene	Sesquiterpene

ESSENTIAL VALIDATION SERVICES | 747 SW 2ND AVE GAINESVILLE, FLORIDA 32601 | 317-361-5044

- Essential Oil testing is performed by using qualitative GC-MS. Method: SOP.T.01 Client Method
 - This report may not be published without the consent of Essential Validation Services.
 - Chromatograph image may be requested
 - This report is valid for 1 year from the analyzed date

Client



Source



Palo Santo Fruit (Bursera graveolens)
006-2021

Number	RT	Area %	Compound Name	Chemical Family
36	29.924	0.41%	gamma-Elemene	Sesquiterpene
37	30.47	0.01%	beta-Copaene	Sesquiterpene
38	30.91	0.02%	alpha-Guaiene	Sesquiterpene
39	31.09	0.04%	allo-Aromadendrene	Sesquiterpene
40	31.77	0.02%	gamma-Murolene	Sesquiterpene
41	31.96	1.14%	Germacrene D	Sesquiterpene
42	32.38	0.02%	Viridiflorene	Sesquiterpene
43	32.55	0.04%	Bicyclogermacrene	Sesquiterpene
44	33.15	0.04%	beta-Bisabolene	Sesquiterpene
45	33.27	0.02%	gamma-Cadinene	Sesquiterpene
46	33.52	0.06%	beta-Cadinene	Sesquiterpene
47	34.99	0.07%	Germacrene B	Sesquiterpene

ESSENTIAL VALIDATION SERVICES | 74 SW 27th AVE GAINESVILLE, FLORIDA 32601 | 352-350-5044

- Essential Oil testing is performed by using qualitative GC-MS. Method: SOP.T.01 Client Method
- This report may not be published without the consent of Essential Validation Services.
- Chromatograph image may be requested
- This report is valid for 1 year from the analyzed date