



Client



NATURAL SOURCING
Essential and Personal Care Ingredients
Manufactured in the United States

Source



Carrot Seed (Daucus carota)
235042

Sample

Carrot Seed (Daucus carota)

Batch #:..... 235042

Type:..... Essential Oil

CAS Number:... 8015-88-1

Natural Sourcing LLC

Client



Website

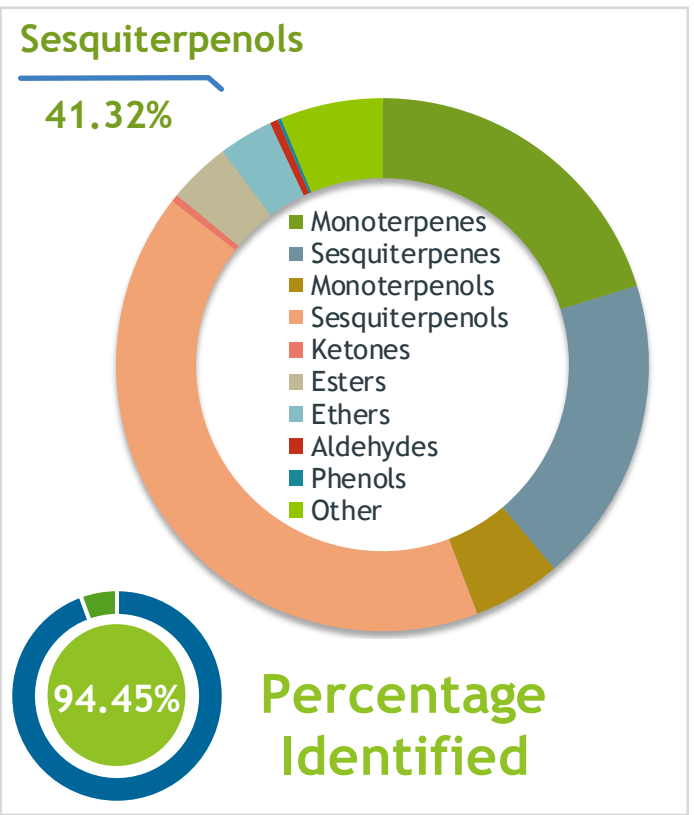


Primary

39.87% | Carotol

7.24% | Sabinene

5.79% | alpha-Pinene



APPROVED

Conclusion

No adulterants, diluents, or contaminants were detected via this method. This oil meets the expected profile for genuine Essential Oil of Carrot Seed (Daucus carota)

Internal Number: | EVS-3692



Essential Validation Services

747 SW 2nd Ave IMB 12 Suite 306
Gainesville, FL 32601

317.361.5044 | <https://essentialvalidationservices.com/>
adam@essentialvalidationservices.com



Monoterpenes	20.21%	20.21%
Sesquiterpenes	18.65%	18.65%
Monoterpenols	5.35%	5.35%
Sesquiterpenols	41.32%	41.32%
Ketones	0.44%	0.44%
Esters	3.80%	3.80%
Ethers	3.30%	3.30%
Aldehydes	0.50%	0.50%
Phenols	0.21%	0.21%
Other	6.22%	6.22%

ESSENTIAL VALIDATION SERVICES | 747 SW 2ND AVE GAINESVILLE, FLORIDA 32601 | 317-361-5044

- Essential Oil testing is performed by using qualitative GC-MS. Method: SOP.T.01 Client Method
 - This report may not be published without the consent of Essential Validation Services.
 - Chromatograph image may be requested
 - This report is valid for 1 year from the analyzed date

Client



Source

Carrot Seed (*Daucus carota*)

235042

Total Percentage		94.45%		
Number	RT	Area %	Compound Name	Chemical Family
1	4.47	0.01%	Hexanal	Aliphatic Aldehyde
2	7.43	0.02%	Heptanal	Aliphatic Aldehyde
3	8.15	0.01%	Tricyclene	Monoterpene
4	8.31	0.20%	alpha-Thujene	Monoterpene
5	8.58	5.79%	alpha-Pinene	Monoterpene
6	9.19	0.36%	Camphene	Monoterpene
7	9.36	0.09%	Thuja-2,4(10)-diene	Monoterpene
8	10.16	7.24%	Sabinene	Monoterpene
9	10.33	0.90%	beta-Pinene	Monoterpene
10	10.69	0.02%	6-Methyl-5-hepten-2-one	Aliphatic Ketone
11	10.91	1.90%	Myrcene	Monoterpene
12	11.06	0.02%	6-Methyl-5-hepten-2-ol	Aliphatic Alcohol
13	11.50	0.04%	Octanal	Aliphatic Aldehyde
14	12.05	0.20%	alpha-Terpinene	Monoterpene
15	12.38	1.35%	meta-Cymene	Monoterpene
16	12.59	1.28%	Limonene	Monoterpene
17	12.97	0.02%	(Z)-beta-Ocimene	Monoterpene
18	13.43	0.02%	(E)-beta-Ocimene	Monoterpene
19	13.92	0.68%	gamma-Terpinene	Monoterpene
20	14.43	0.17%	trans-Sabinene hydrate	Monoterpenol
21	15.15	0.14%	Terpinolene	Monoterpene
22	15.35	0.03%	para-Cymenene	Monoterpene
23	15.86	0.60%	Linalool	Monoterpenol
24	15.97	0.03%	6-Methyl-3,5-heptadien-2-one	Monoterpene Ketone
25	16.10	0.01%	Nonanal	Aliphatic Aldehyde
26	16.18	0.03%	alpha-Pinene oxide	Monoterpene Ether
27	16.80	0.01%	trans-para-Mentha-2,8-dien-1-ol	Monoterpenol
28	16.92	0.02%	cis-para-Menth-2-en-1-ol	Monoterpenol
29	17.02	0.09%	alpha-Campholene aldehyde	Monoterpene Aldehyde
30	17.10	0.02%	alpha-Thujone	Monoterpene Ketone
31	17.20	0.02%	Limona ketone	Simple Phenolic
32	17.63	0.20%	trans-Pinocarveol	Monoterpenol
33	17.73	0.09%	cis-Verbenol	Monoterpenol
34	17.89	0.45%	trans-Verbenol	Monoterpenol
35	18.09	0.04%	(Z)-isocitral	Monoterpene Aldehyde

ESSENTIAL VALIDATION SERVICES | 747 SW 2ND AVE GAINESVILLE, FLORIDA 32601 | 317-361-5044

- Essential Oil testing is performed by using qualitative GC-MS. Method: SOP.T.01 Client Method
 - This report may not be published without the consent of Essential Validation Services.
 - Chromatograph image may be requested
 - This report is valid for 1 year from the analyzed date

Client



Source

Carrot Seed (*Daucus carota*)

235042

Number	RT	Area %	Compound Name	Chemical Family
36	18.393	0.04%	Sabina ketone	Monoterpene Aldehyde
37	18.62	0.12%	(E)-2-Nonenal	Aliphatic Aldehyde
38	19.09	0.07%	Borneol	Monoterpenol
39	19.25	0.01%	Pinocamphone	Monoterpene Ketone
40	19.51	0.45%	Terpinen-4-ol	Monoterpenol
41	19.82	0.06%	para-Cymen-8-ol	Monoterpenol
42	20.16	0.16%	Umbellulone	Monoterpene Ketone
43	20.23	0.09%	Myrtenol	Monoterpenol
44	20.68	0.10%	Verbenone	Monoterpene Ketone
45	21.30	0.07%	trans-Carveol	Monoterpenol
46	21.60	0.03%	Nerol	Monoterpenol
47	22.19	0.02%	Neral	Monoterpene Aldehyde
48	22.30	0.05%	Cuminal	Monoterpene Aldehyde
49	22.39	0.06%	Carvone	Monoterpene Ketone
50	22.64	0.02%	cis-Carveol	Monoterpenol
51	22.82	2.96%	Geraniol	Monoterpenol
52	23.54	0.06%	Citral	Monoterpene Aldehyde
53	23.87	0.04%	Phellandral	Monoterpene Aldehyde
54	24.25	0.34%	Bornyl acetate	Monoterpene Ester
55	24.55	0.06%	Cumin alcohol	Monoterpenol
56	24.94	0.05%	Geranyl formate	Monoterpene Ester
57	27.00	0.25%	alpha-Terpinyl acetate	Monoterpene Ester
58	27.59	0.01%	Neryl acetate	Monoterpene Ester
59	28.22	0.06%	alpha-Copaene	Sesquiterpene
60	28.38	1.23%	Daucene	Sesquiterpene
61	28.44	2.95%	Geranyl acetate	Monoterpene Ester
62	28.82	0.16%	7-epi-Sesquithujene	Sesquiterpene
63	29.45	0.08%	Sesquithujene	Sesquiterpene
64	29.86	0.76%	cis-alpha-Bergamotene	Sesquiterpene
65	30.04	3.08%	cis-Caryophyllene	Sesquiterpene
66	30.51	0.12%	gamma-Elemene	Sesquiterpene
67	30.69	1.64%	trans-alpha-Bergamotene	Sesquiterpene
68	31.12	0.14%	beta-Caryophyllene	Sesquiterpene
69	31.23	0.05%	epi-beta-Santalene	Sesquiterpene
70	31.55	2.84%	(Z)-beta-Farnesene	Sesquiterpene
71	31.67	1.70%	(E)-beta-Farnesene	Sesquiterpene

ESSENTIAL VALIDATION SERVICES | 747 SW 2ND AVE GAINESVILLE, FLORIDA 32601 | 317-361-5044

- Essential Oil testing is performed by using qualitative GC-MS. Method: SOP.T.01 Client Method
 - This report may not be published without the consent of Essential Validation Services.
 - Chromatograph image may be requested
 - This report is valid for 1 year from the analyzed date

